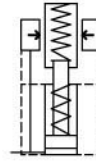
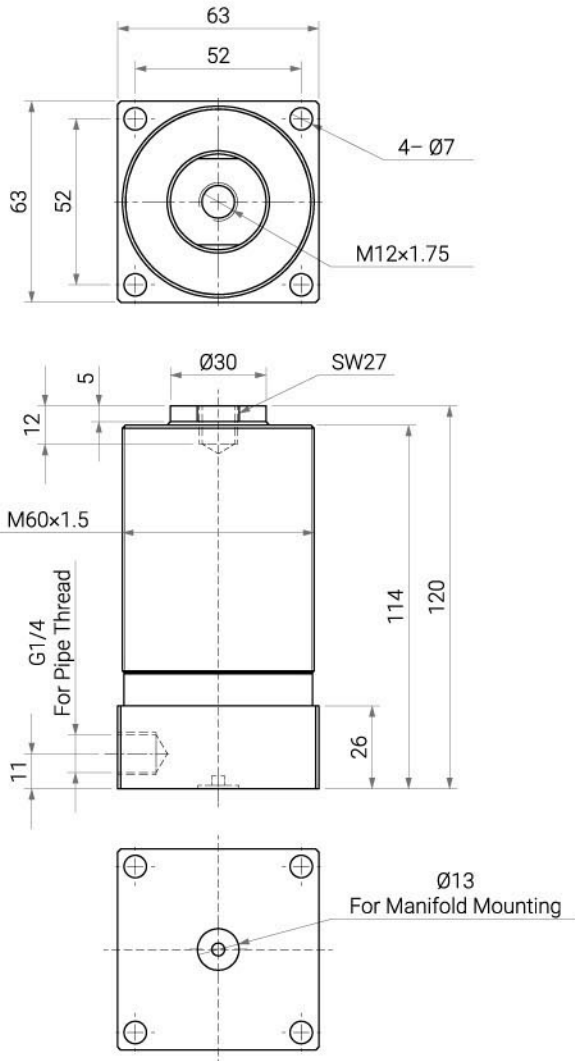


SP-32B Hydraulic Work Support Cylinder

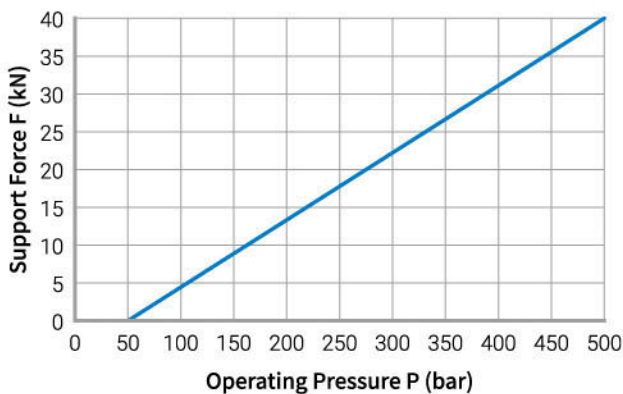
Rod: Ø16~Ø40 mm | Pressure Max: 500 bar

Specifications

- The pipe thread connection is located on the side of the base, and the manifold mounting with O-ring seal is located below the base.
- Part-No.: SP-32B – Pipe Thread Type.
SP-M32B – Manifold-Mounted Type.



Support Force & Hydraulic Pressure Relationship Diagram



Items	Unit	SP-32B
Rod Diameter	mm	Ø32
Stroke	mm	12
Support Force (500 bar)	kN	40
Min. Operating Pressure	bar	100
O-ring for Manifold-Mounted	mm	10.5×1.5