

# SP-25 Hydraulic Work Support Cylinder

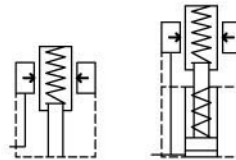
Rod:  $\varnothing 16 \sim \varnothing 40$  mm | Pressure Max: 500 bar

SP-25

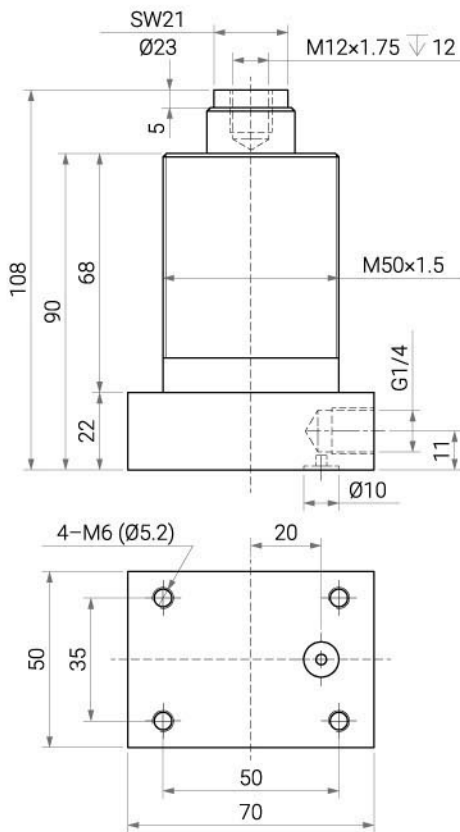
## Specifications

- The maximum support force can reach up to 25 kN and is available in two types, A and B. You can choose between pipe thread type or manifold-mounted type based on your needs.
- Part-No.:
  - SP-25A – Spring-Extend with Pipe Thread Type.
  - SP-M25A – Spring-Extend with Manifold-Mounted Type.
  - SP-25B – Hydraulic-Extend with Pipe Thread Type.
  - SP-M25B – Hydraulic-Extend with Manifold-Mounted Type.

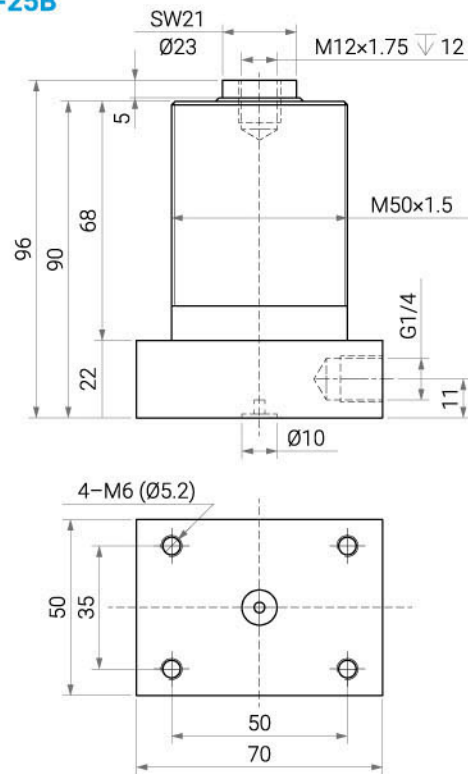
TYPE A    TYPE B



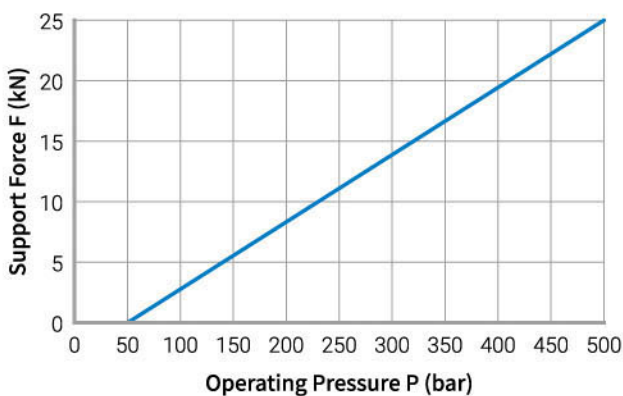
SP-25A



SP-25B



## Support Force & Hydraulic Pressure Relationship Diagram



Items	Unit	SP-25
Rod Diameter	mm	$\varnothing 25$
Stroke	mm	12
Min. Operating Pressure	bar	100
Spring Contact Force (Min. / Max.)	N	30 / 50
Support Force (500 bar)	kN	25
O-ring for Manifold-Mounted Type	mm	7.5×1.5