

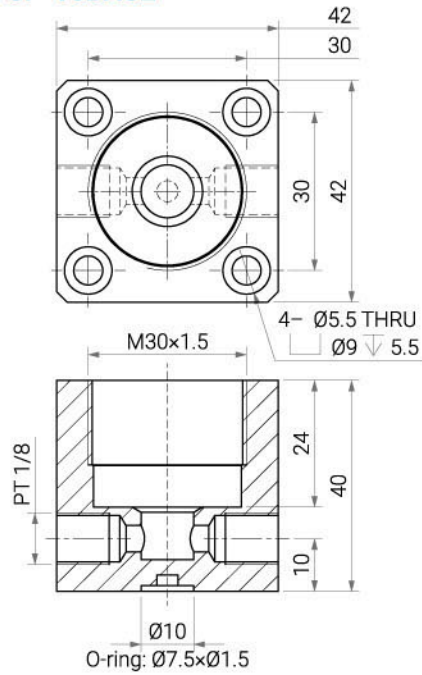
# SP-16 Hydraulic Work Support Cylinder

Rod: Ø16~Ø40 mm | Pressure Max: 500 bar

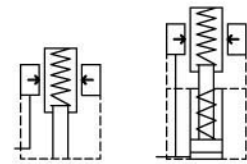
## Specifications

- Compact design allows installation in tight spaces.
- When installing, first insert the white sealing ring. When tightening, avoid excessive force; simply tighten until it doesn't leak oil. Excessive force during tightening can reduce the sealing effectiveness of the sealing ring or even cause it to lose its leak-proof function due to excessive deformation.

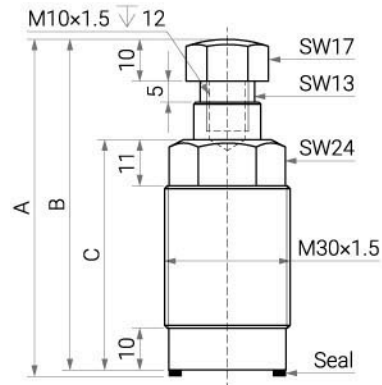
### SP-16BASE



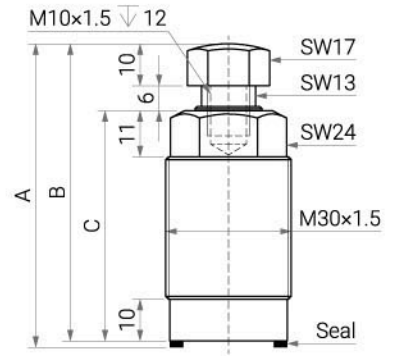
### TYPE A TYPE B



### SP-16A

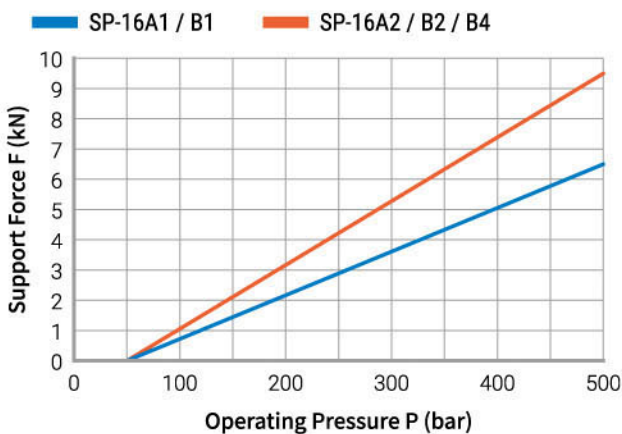


### SP-16B

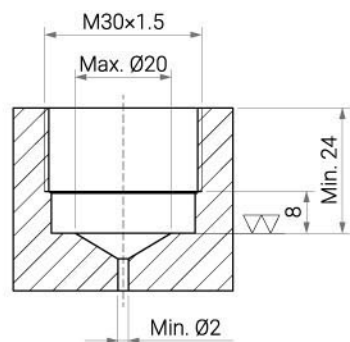


Items	Unit	SP-16A1	SP-16A2	SP-16B1	SP-16B2	SP-16B4
Rod Diameter	mm	Ø16	Ø16	Ø16	Ø16	Ø16
Stroke	mm	8	8	8	8	15
Min. Pressure	bar	100	100	100	100	100
Spring Contact Force (Min. / Max.)	N	8 / 13	8 / 13	10 / 23	10 / 23	10 / 23
Support Force (500 bar)	kN	6.5	9.5	6.5	9.5	9.5
A	mm	80.5	90.5	72.5	82.5	89.5
B	mm	79	89	71	81	88
C	mm	55	65	55	65	72

## Support Force & Hydraulic Pressure Relationship Diagram



## Installation Dimensions



## Accessories: Contact Bolts

