

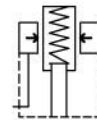
LSP-12 | Low Pressure Hydraulic Work Support Cylinder

Rod: $\varnothing 10 \sim \varnothing 20$ mm | Pressure Max: 70 bar

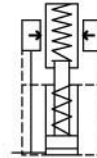
Specifications

- Compact in size, suitable for installation on smaller fixtures in limited spaces.
- When installing, first insert the white sealing ring. When tightening, avoid excessive force; simply tighten until it doesn't leak oil. Excessive force during tightening can reduce the sealing effectiveness of the sealing ring or even cause it to lose its leak-proof function due to excessive deformation.
- Part-No.: LSP-12A – Spring-Extend Type.
LSP-12B – Hydraulic-Extend Type.

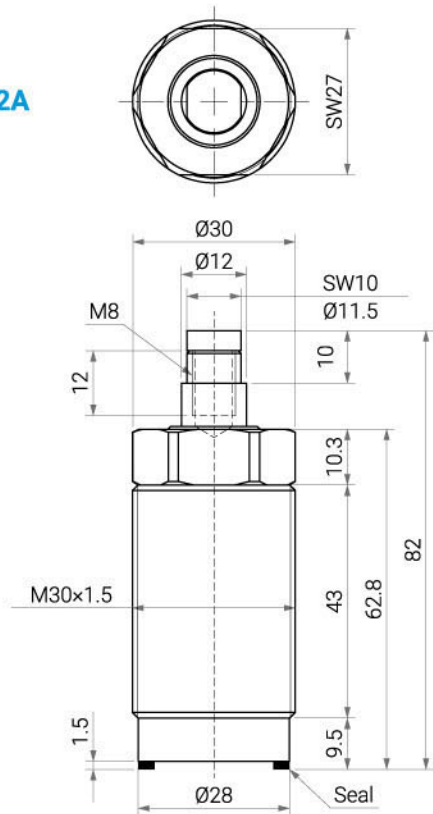
TYPE A



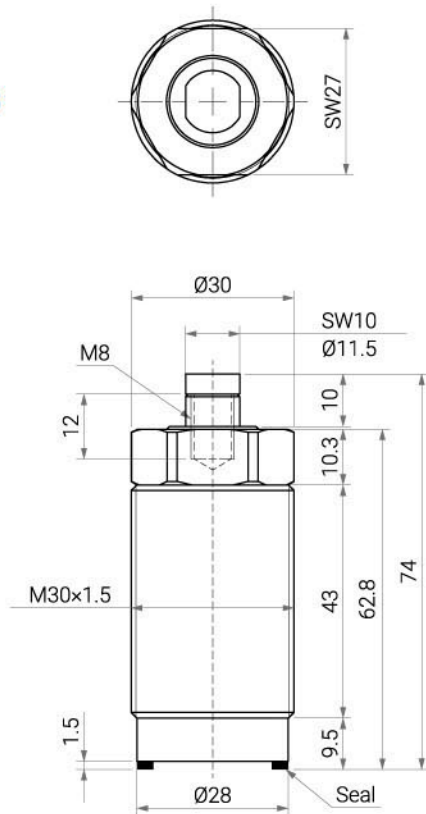
TYPE B



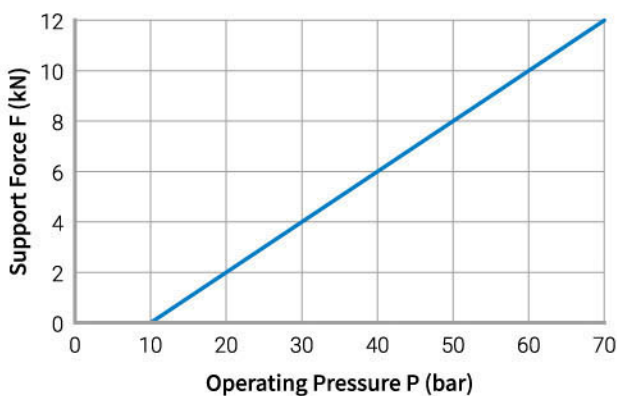
LSP-12A



LSP-12B



Support Force & Hydraulic Pressure Relationship Diagram



Items	Unit	LSP-12
Rod Diameter	mm	$\varnothing 12$
Stroke	mm	8
Support Force (70 bar)	kN	12