

ABP | Air Drive Booster Pump

Pressure Max: 6 bar

Introduction

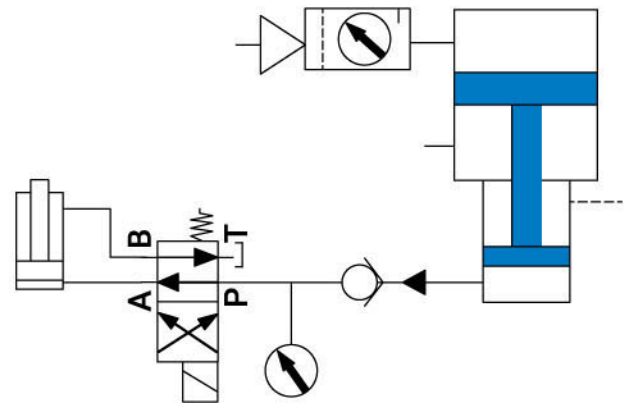
- This pump is driven by air pressure to boost and output hydraulic oil.
- It can serve as a power source for hydraulic cylinders, with a higher flow rate than typical boosters. It allows continuous boosting without limitations on the actuation cylinder's stroke.
- The input air pressure can be adjusted using an air pressure regulating valve to control the output hydraulic pressure. When the output pressure decreases due to external factors, the pump automatically compensates. Therefore, it is particularly suitable for prolonged hydraulic clamping. Compared to electric pumps, it is more energy-efficient and does not generate oil temperature.
- The product comes in two boost ratios: 10× boost and 50× boost, suitable for low-pressure or high-pressure fixtures, respectively.
- The compact size of the product saves space and facilitates easy installation.
- The product is primarily composed of three main parts: oil tank, solenoid valve, and pneumatic pump, which can be purchased separately.



Specifications

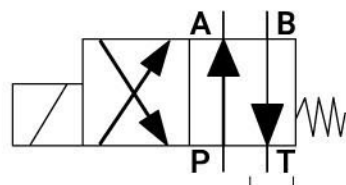
Items	Specifications	
Input Fluid	Compressed Air	
Max. Pressure	6 bar	
Boost Ratio	10	50
Output Flow Rate (5 bar)	8 L/min	1.6 L/min
Oil Tank Capacity	5 L	
Dimensions	L: 300×W: 300×H: 400 mm	
Types of Hydraulic Oil	ISO-VG68	

Pump



HDV Pneumatically Controlled Hydraulic Solenoid Valve

- This solenoid valve has standard A and B oil outlets with G1/8 threaded connections following the JIS (Japanese Industrial Standards) specifications.
- It is driven by compressed air at 6 bar and can operate at a maximum hydraulic pressure of 500 bar.
- The solenoid valve is a four-port two-position valve, and it can also be equipped with a pressure switch detector. Please specify the pressure range when placing an order.
- A single pump can accommodate up to two solenoid valves. For custom orders requiring dual solenoid valves, please provide relevant requirements during the order placement.



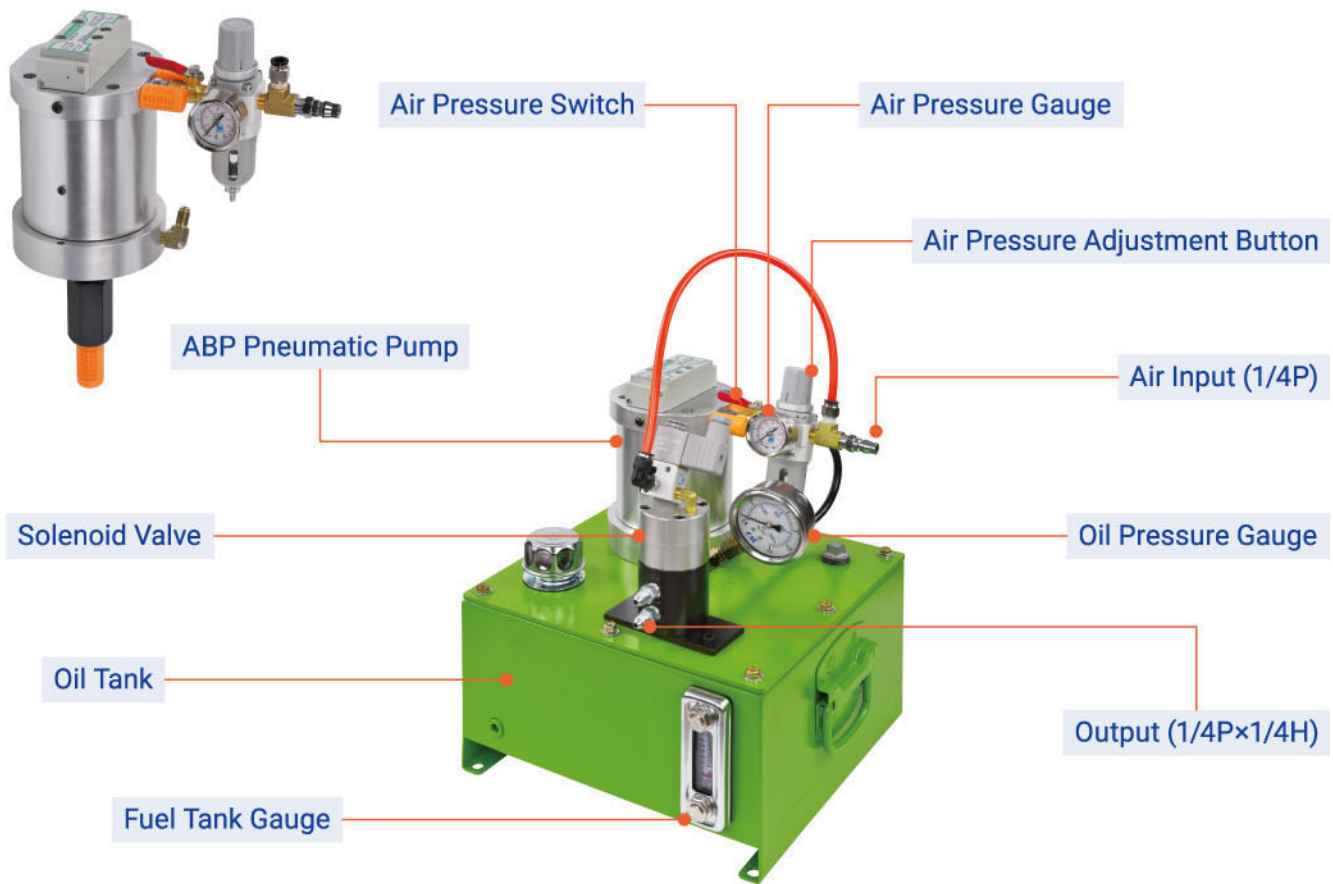
ABP | Air Drive Booster Pump

Pressure Max: 6 bar

ABP

Instructions for Use

- After connecting the air input to the air pressure source, turn on the air pressure switch and lift the air pressure adjustment button. Rotate it to adjust while simultaneously confirming the pressure value on the output pressure gauge. Once adjusted, press down and secure the air pressure adjustment button. By controlling the air pressure solenoid valve, you can adjust the four-hole two-position hydraulic valve. The oil gauge on the oil tank allows you to monitor the remaining oil level. When replenishing hydraulic oil, fill it up to the level indicated on the oil gauge. Do not overfill the entire tank, as a full tank during pump operation may cause oil leakage from the top of the tank.



Part-No.

ABP - 50 × AC110V



No.	Meaning	Option
1	Series	ABP
2	Boost Ratio	10 / 50
3	Input Voltage	AC110V / AC220V / DC24V