

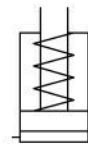
1371-010 Hydraulic Block Cylinder

Piston: Ø16 mm | Pressure Max: 500 bar

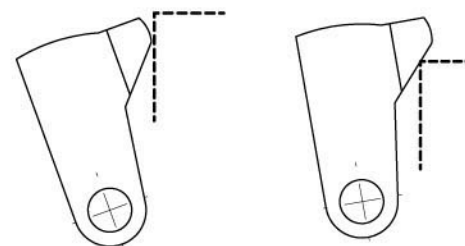
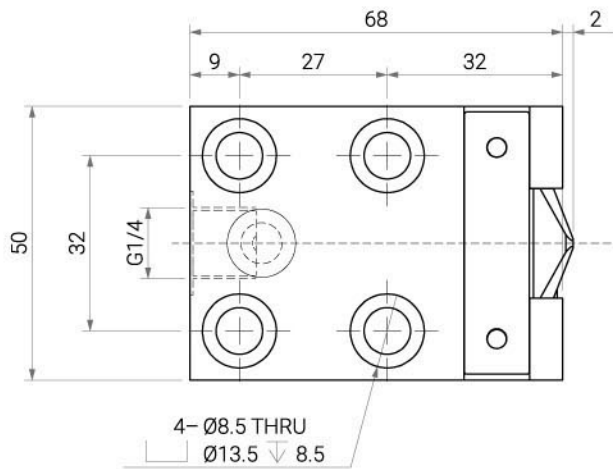
1371-010

Introduction

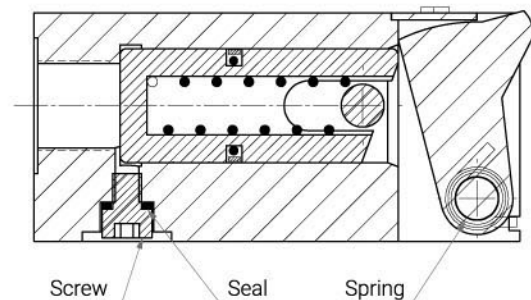
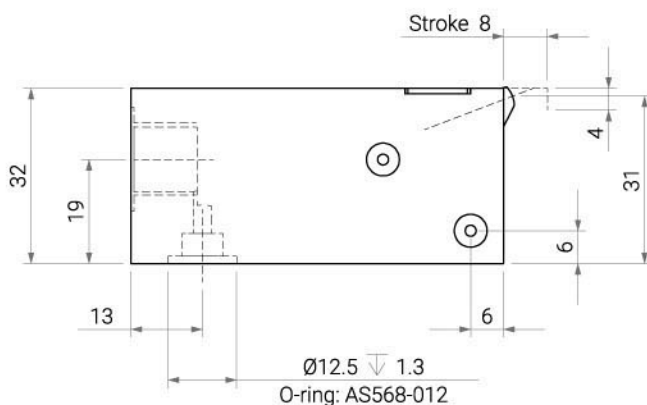
- The 1371-010 is primarily used when workpieces cannot be clamped from above. It is a low-position swinging fixed hydraulic cylinder, single-acting, with spring return, and a maximum operating pressure of 500 bar.
- This cylinder is fixed at a low position with a central pivot point for swinging movement, allowing it to provide two-dimensional force. The horizontal component of the output force is approximately 90%, and the downward vertical component is about 30%. The exact force distribution may vary depending on the clamping position.
- This product features oil holes for both pipe thread and manifold-mounted. Normally, the oil holes on the manifold-mounted are sealed with internal hex screws and sealing rings. To use it with the manifold-mounted, you should remove the internal hex screws and sealing rings and plug the G1/4 orifice.
- This hydraulic cylinder is designed for specific applications where workpieces cannot be easily clamped from above, and it offers unique force distribution characteristics for such scenarios.



Specifications



Clamping Position



Piston Diameter	Stroke	Manifold-Mounted O-ring	Force		The Amount of Oil Used Per 10 mm Stroke
			100 bar	500 bar	
16 mm	8 mm	AS568-012	1.7 kN	8.5 kN	2 cm ³